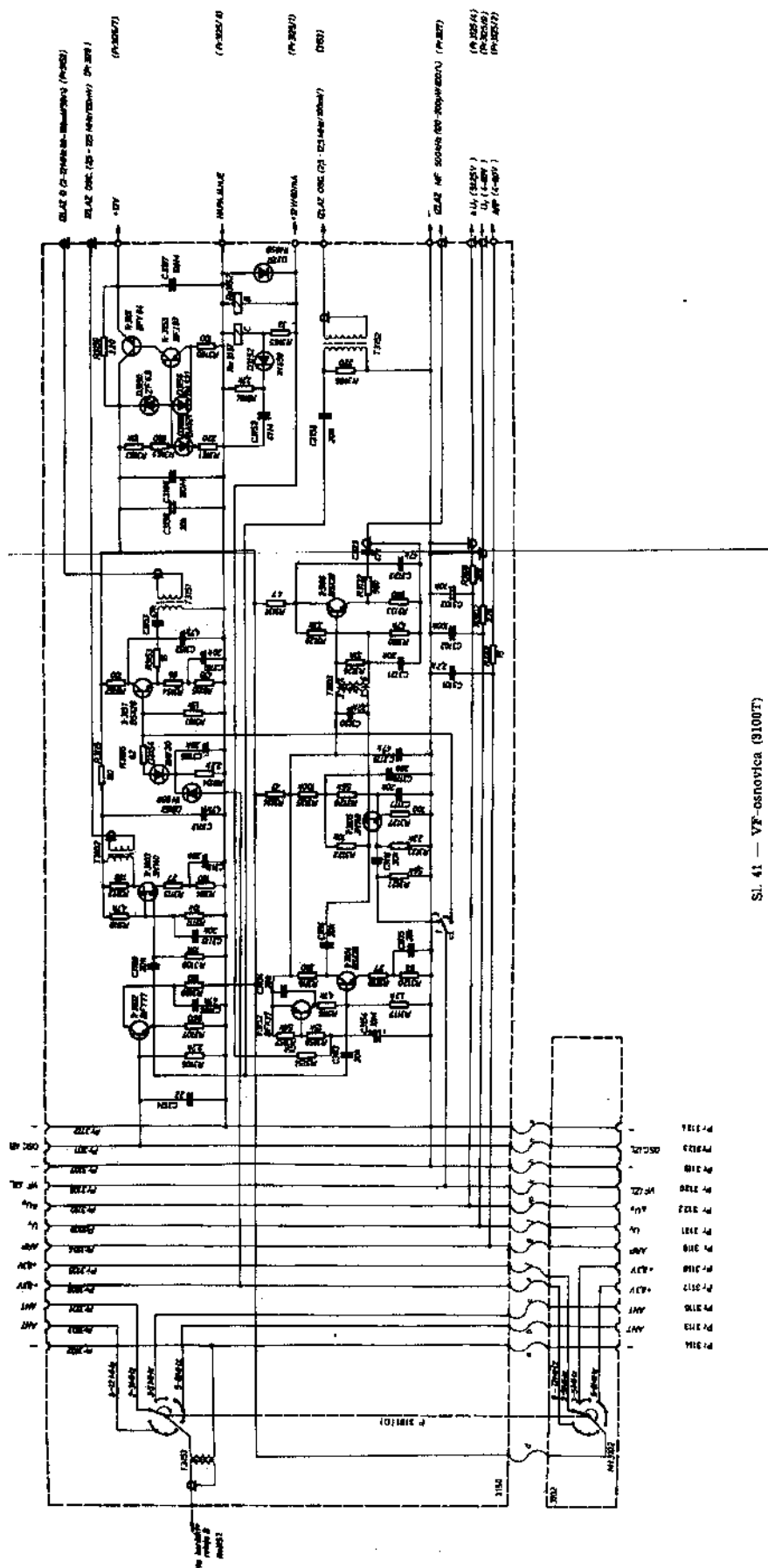
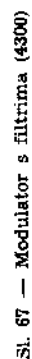
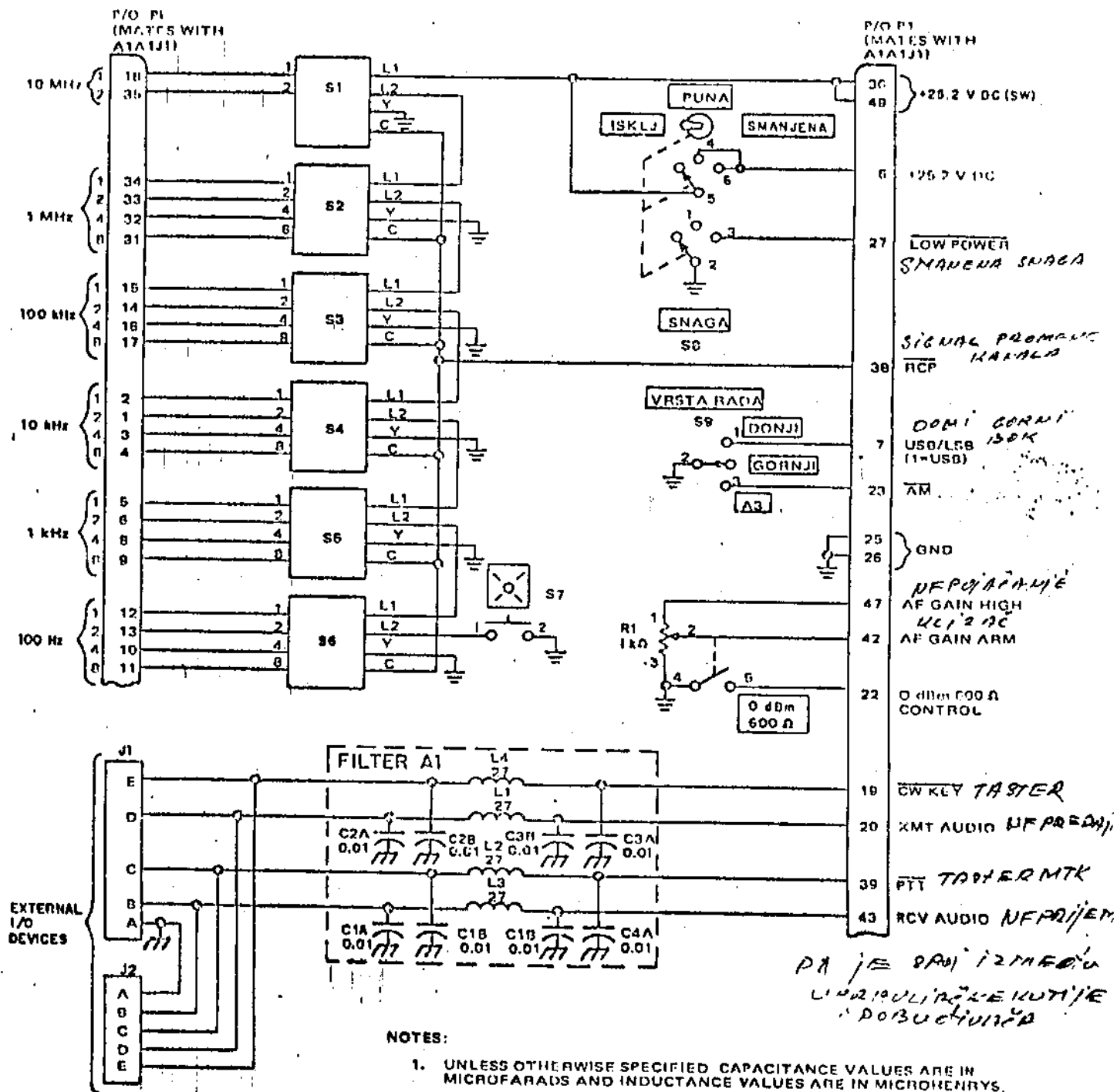


SL 45 — Vezna ploča (2700)





UNCLASSIFIED



NOTES:

1. UNLESS OTHERWISE SPECIFIED, CAPACITANCE VALUES ARE IN MICROFARADS AND INDUCTANCE VALUES ARE IN MICROHENRYS.
2. PARTIAL REFERENCE DESIGNATIONS ARE SHOWN; FOR COMPLETE DESIGNATION, PREFIX WITH UNIT AND/OR ASSEMBLY DESIGNATION.

ELEMENTI KASZVIERA KOD TASZOVANA

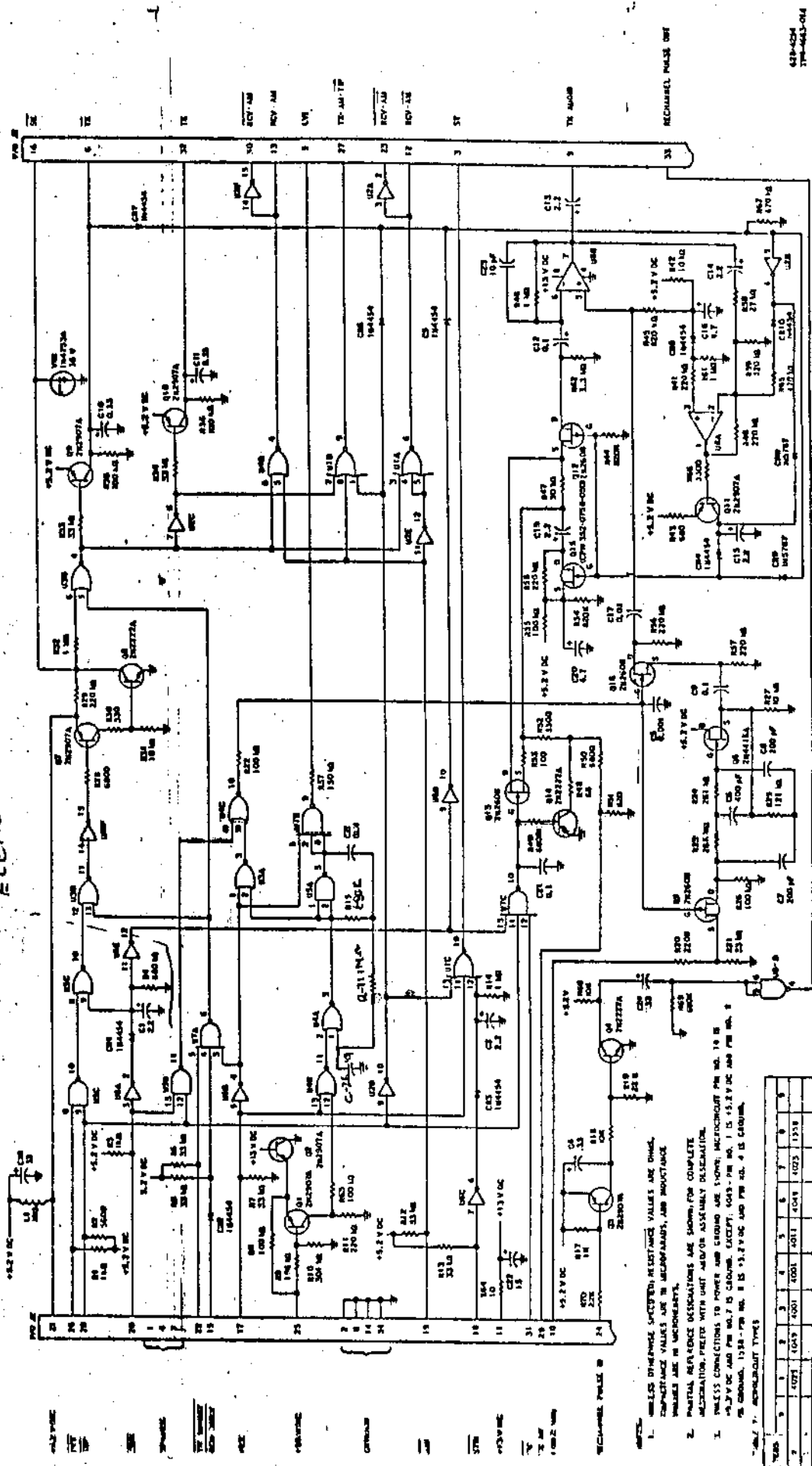
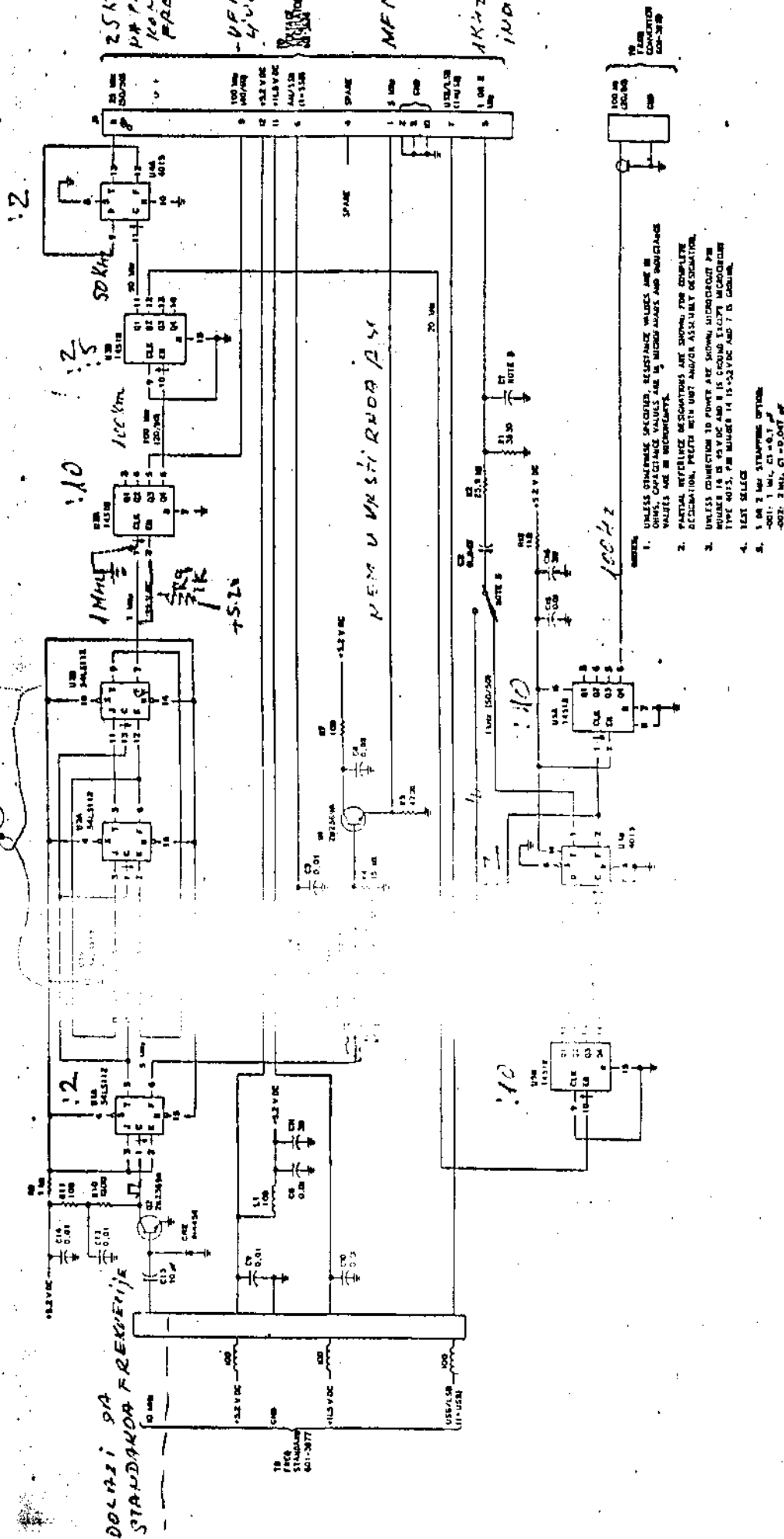
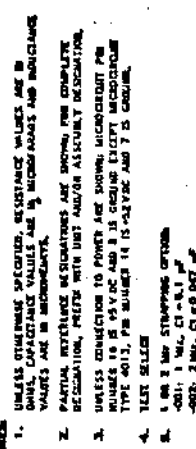


Figure 8

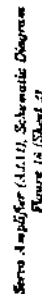


Food Frequency Inventory (A 64142)
Schematic Diagram
Figure 8



Food Frequency Indicator (A&A-L-42)
Schematic Diagram
Figure 8

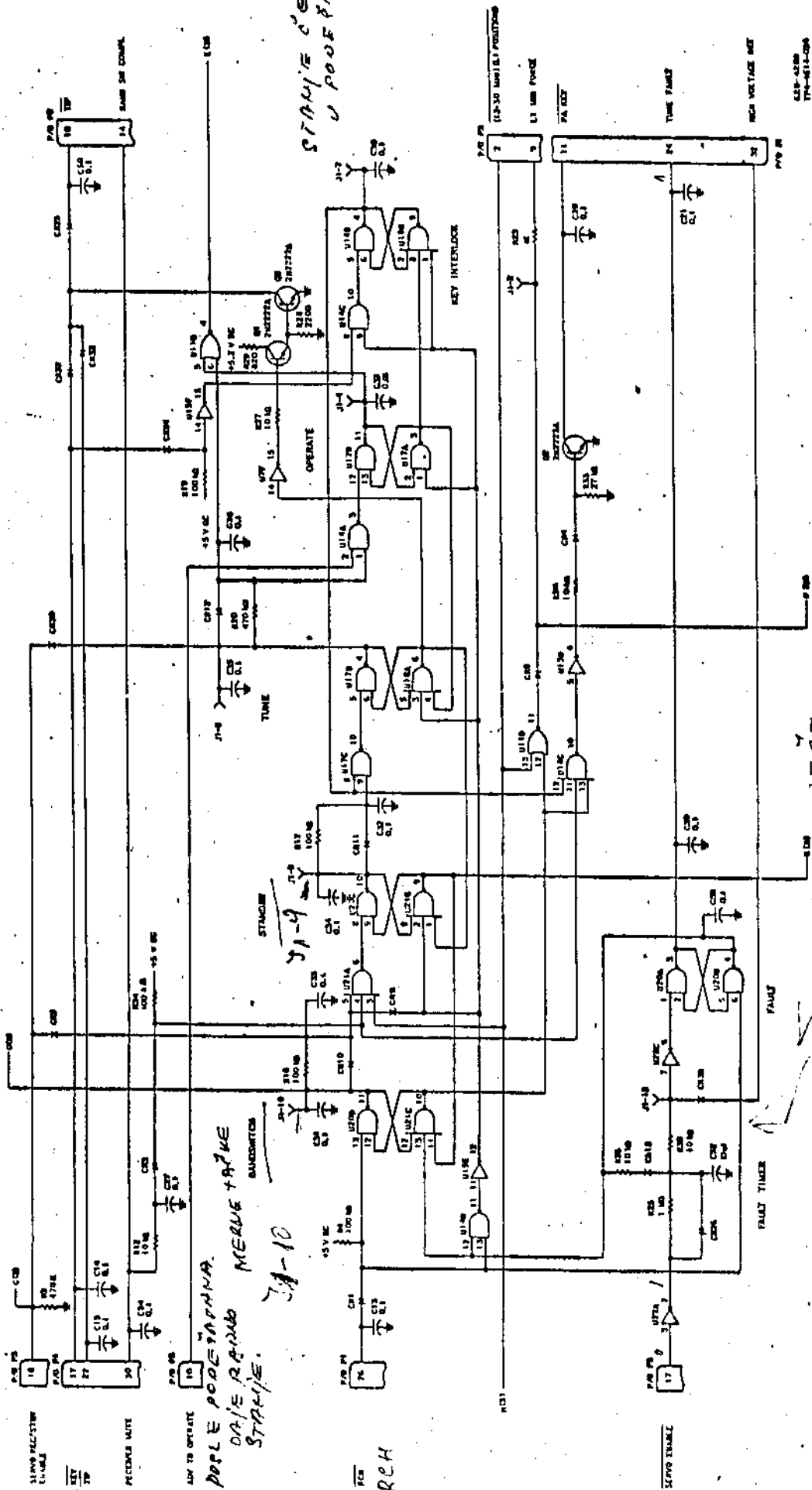
1000



ALC(ARN)
SUBSTANCES
CAPTIONED AS

GENERIRANJE ARN(ALE)

diagrams 523-0766777



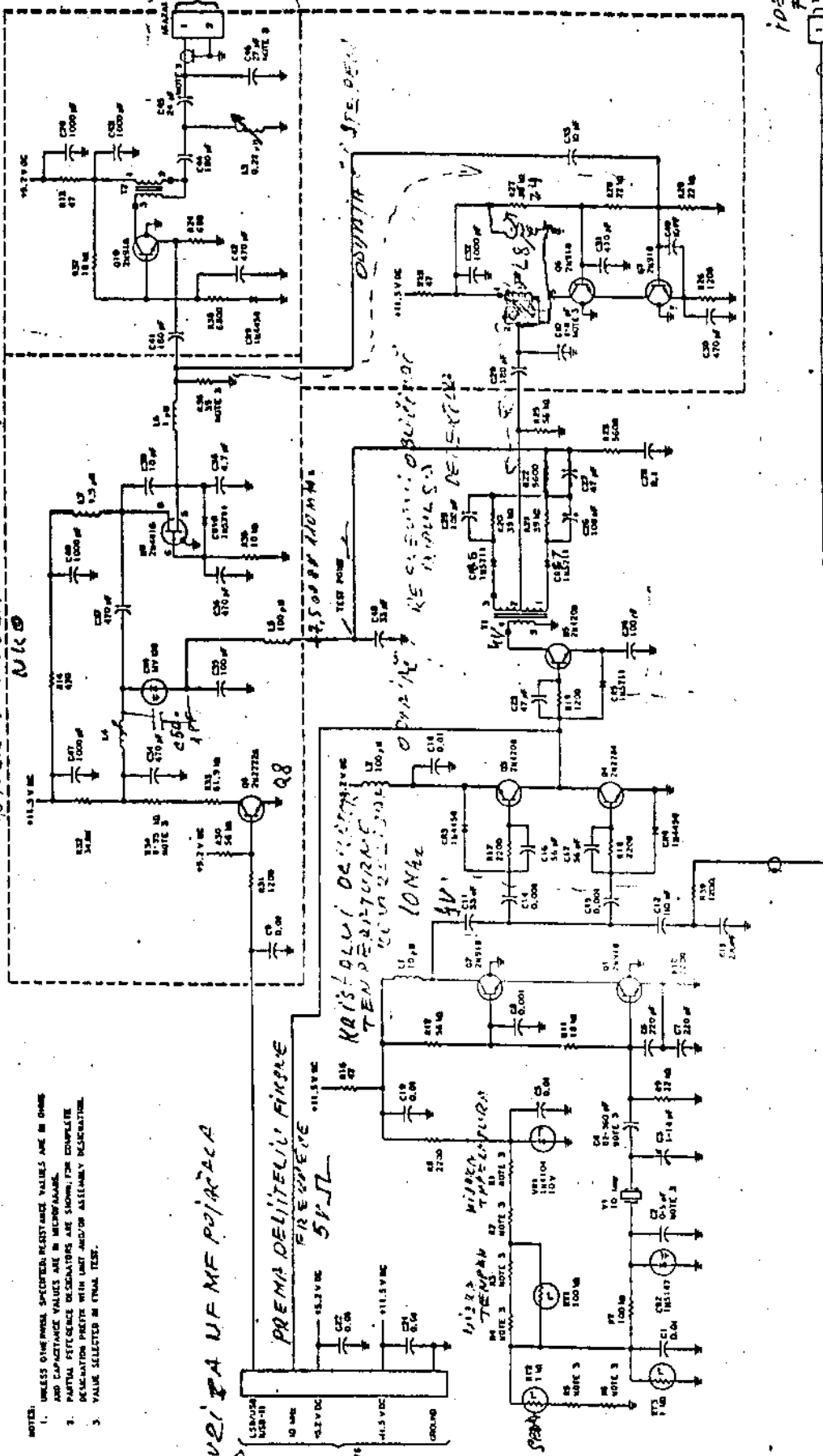
Control Logic (ALU), Schematic Diagram
Figure 17 (Sheet 2)

19/50

7 FREKVENTNI STANDARD

diagrams 523-0766777

UPRAVLJANJE OSILATOR ODAJNEKI STEPEN



- NOTES:
1. UNLESS OTHERWISE SPECIFIED RESISTANCE VALUES ARE IN OHMS AND CAPACITANCE VALUES ARE IN MICROFARADS.
 2. PARTIAL REFERENCE DESIGNATORS ARE SHOWN FOR COMPLETE DISAMBIGUATION. PARTIAL REFERENCE DESIGNATORS ARE SHOWN FOR COMPLETE DISAMBIGUATION.
 3. VALUE SELECTED IN FINAL TEST.

Frequency Standard (444.11). Schematic Diagram Figure 7

[illegible]

174-613-
SERVO PQ 1A 100 193/191

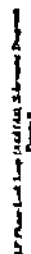
Seitensampel (AL12) Scheinwerfer Diagramm

As for the money, it will

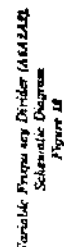
INFORMATION PO 100211

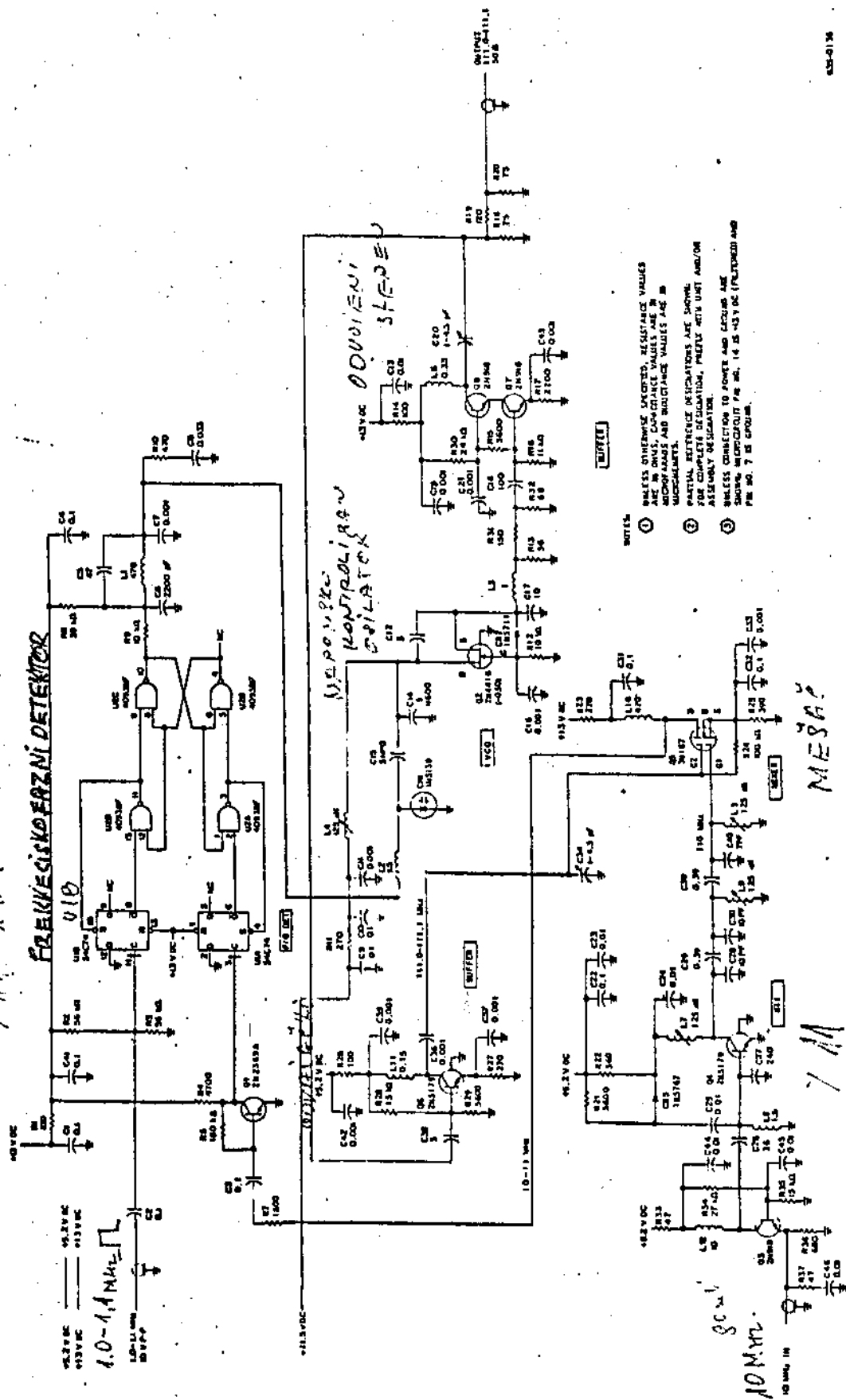
027E2E0E-010

Algarve 521 0765777



LA 42A2.
PROMENUE FREQUENTATIVE.
DEL'ET.

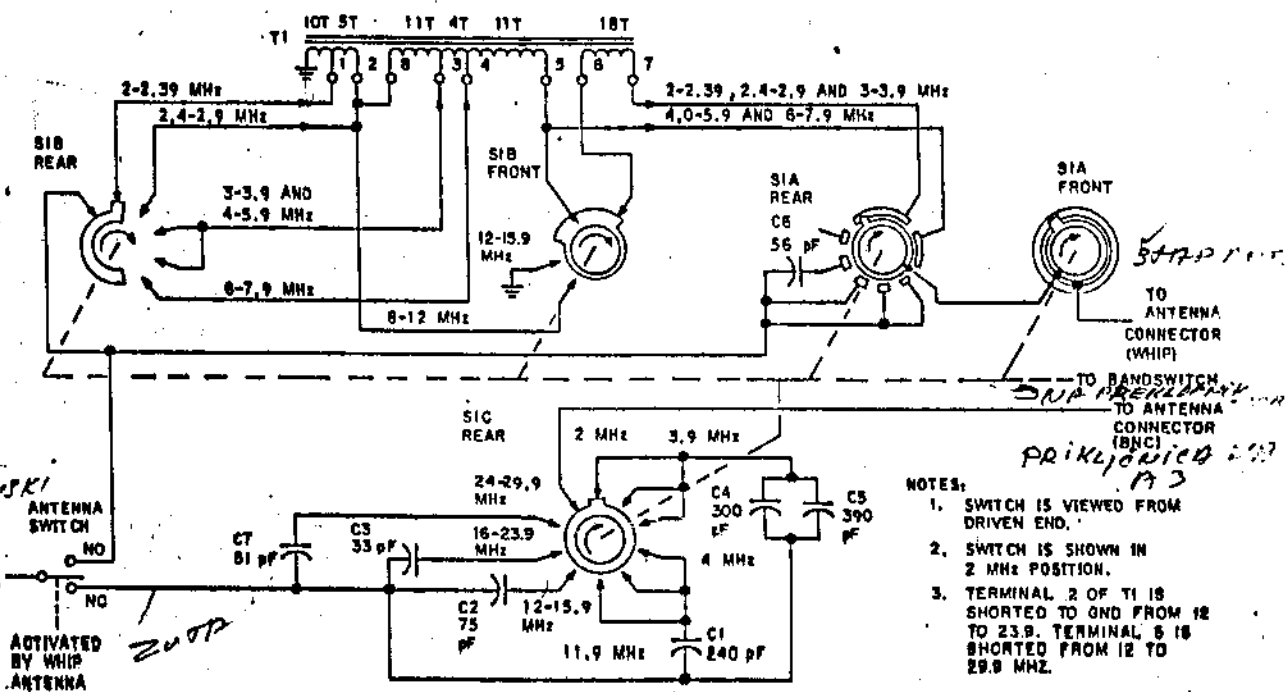




Frequency Converter (FEL) Schematic Diagram
Figure 10

POOLEN
SA STRAŽUJE
STRAŽE

VF (NA ANTENSKI
DREKLOPNIK)
A3

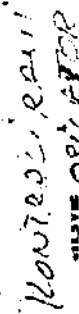


- NOTES:
1. SWITCH IS VIEWED FROM DRIVEN END.
 2. SWITCH IS SHOWN IN 2 MHz POSITION.
 3. TERMINAL 2 OF T1 IS SHORTED TO GND FROM 12 TO 23.9. TERMINAL 8 IS SHORTED FROM 12 TO 29.9 MHz.

628-4264
TP4-4618-013

Autotransformer (A3A9), Schematic Diagram
Figure 24

UPOZORNENJE
PRERLOPNICE PIKAZAL
U POLICAJU SA 2 MHz

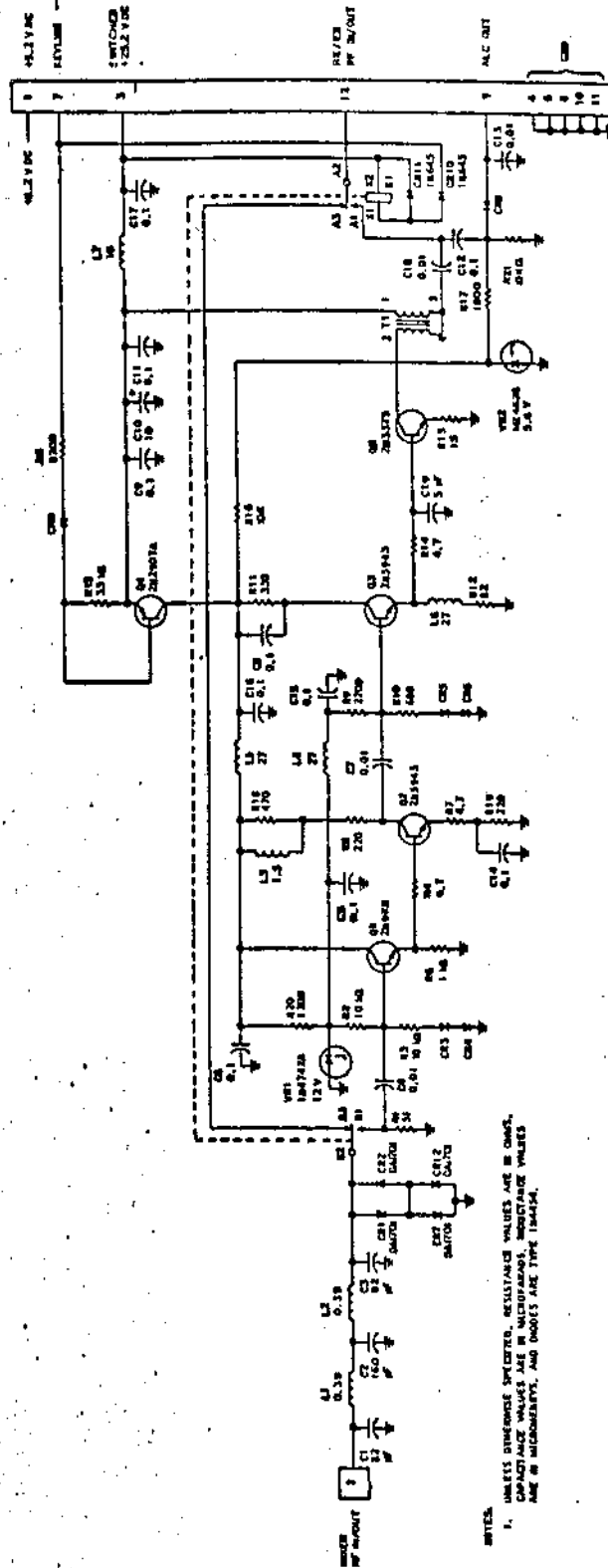


THESE TWO TESTS WERE CONDUCTED IN THE SAME MANNER AS THE OTHERS. THE RESULTS OF THE TESTS WERE AS FOLLOWS:

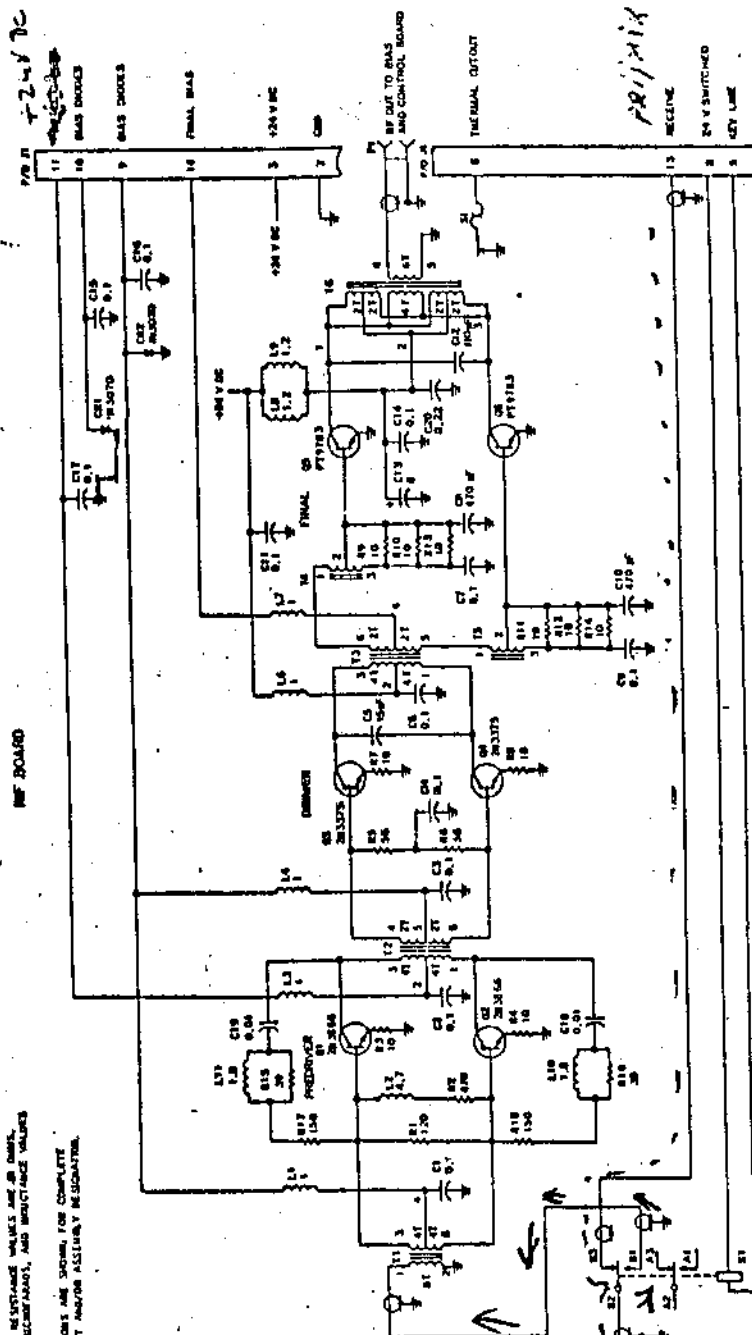
10-01-00

HY Phase-Lock Loop (AIAA 2.7). Schematic Diagrams
Figure 18

AKTIVIRANJE
PREDOPOLA



+24V DC Fin 2MS Rd.



1. UNLESS OTHERWISE SPECIFIED, RESISTANCE VALUES ARE IN OHMS, CAPACITANCE VALUES ARE IN PICOFARADS, AND INDUCTANCE VALUES ARE IN MICROHENRS.
2. PARTIAL REFERENCE DESIGNATIONS ARE SHOWN FOR COMPLETE IDENTIFICATION, PREFIX WITH UNIT AND/OR ALLIANCE DESIGNATION.

POJACENJE 200X

100mR

PREDAJA